

**SPECIFICATION**

AREA DATA	SPAN	CHORD	AREA
UPPER WING	130"	15'-6"	2000
LOWER WING	24"	11'-6"	950
TOTAL OF WINGS			2950
UPPER TAILPLANE	24"	4'-3.5"	100
LOWER TAILPLANE	24"	4'-3.5"	100
ELEVATORS	23'-2"	2'-2.25"	49 + 47.3
TOTAL OF TAILPLANES + ELEVATORS			296.3
FNS EACH	8'-5"	4'-1.5"	34.5
RUDERS EACH	8'-2"	2'-10.25"	20.5
TOTAL OF FNS+RUDERS			61.5
			185

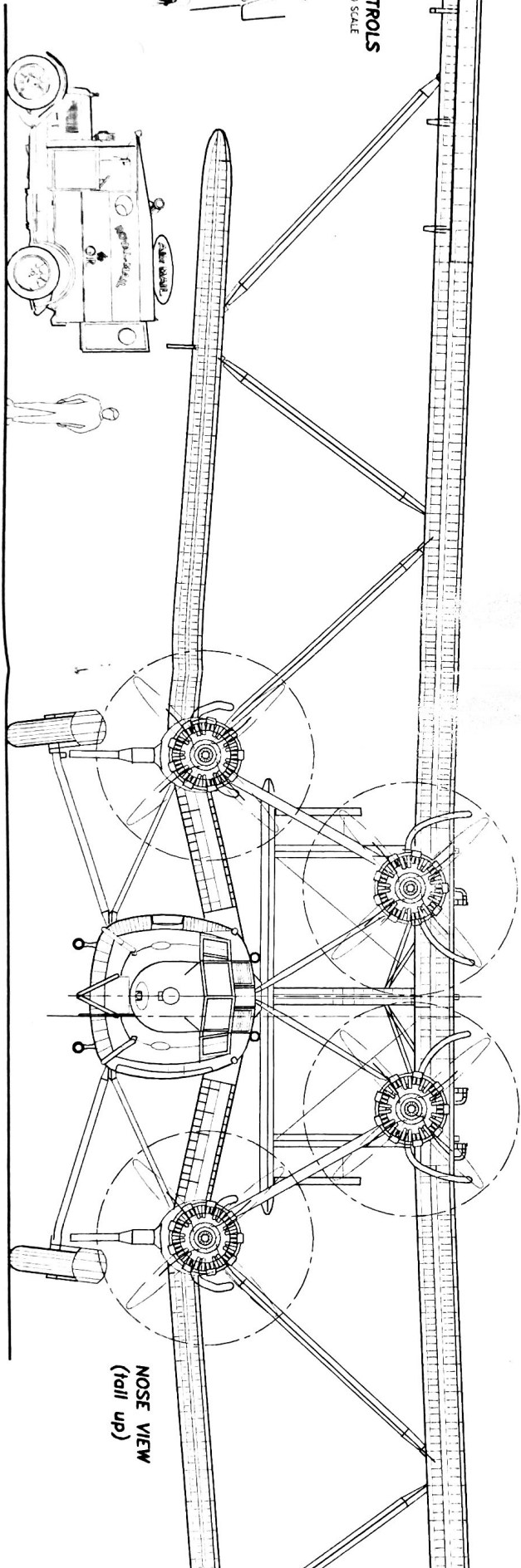
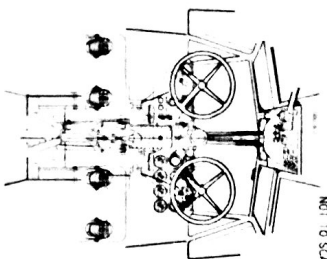
BIPLANE TAILPLANE INCIDENCE ADJUSTABLE FROM -1° TO -8° RELATIVE TO WING CENTRELINE

ELEVATOR TRAVEL - UP 25° DOWN 20°

RANGE OF RUDDER MOVEMENT ±20°

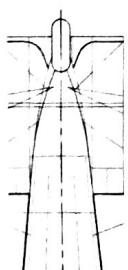
AILERONS IN UPPER WINGS ONLY

**FLIGHT DECK & CONTROLS**  
NOT TO SCALE



FORWARD FUSELAGE CONSTRUCTION IS CORRUGATED DURAL OF 2" GAUGE FORMED AS A SO-CALLED MONOCOQUE WITH CORRECT CHANNEL SUPPORTING STRUCTURE MAINLY RIVETED TOGETHER AND FACED WITH SHEET/STRIP TO MAKE RIVETED BOX FORMERS - THIS STRUCTURE IS TIGERED BETWEEN TUBULAR LONGERONS AND SIMILARLY FABRICATED

DOUBLE SHEET AND CHANNEL MAIN FUSELAGE FORMERS THE MOST SECTION USED THAT SHEETING IN PLACE OF THE CORRUGATED PANELS OF THE CABIN AREAS, REAR FUSELAGE IS FROM WILDED STEEL TUBING AND FABRIC COVERED SHOWING 1920S ANCESTRY



NOTE: ONLY LOWER TAILPLANE HAS A CUT-OUT TO ALLOW FOR RUDDER/TAIWHEEL MOVEMENT

# H.P.42E AND H.P.42W

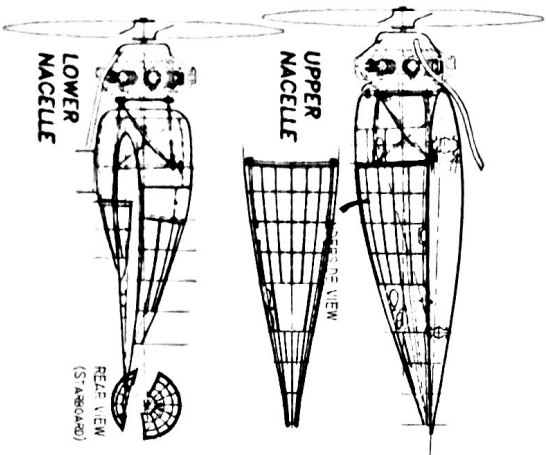
EXTERNALLY SIMILAR, THE FOUR 42E EXAMPLES OPERATED ON ROUTES EAST FROM CARO TO KARACHI AND INCLUDING THE CAPE ROUTE WHEREAS THE FOUR 42W VERSIONS WERE USED MAINLY IN EUROPE ALTHOUGH THIS CHANGED ACCORDING TO NEEDS AT ANY TIME.

42E WAS FITTED WITH 430hp BRISTOL JUPITER XII.F ENGINES GEARED 0.5:1

42W HAD 350hp JUPITER X.F.W SUPERCHARGED ENGINES. BOTH TYPES WERE FITTED WITH FIXED PITCH 4-BLADED PROPELLERS BUT THE 42E IS DISTINGUISHABLE BY ITS USE OF DOUBLE TWO-BLADED PROPELLERS.

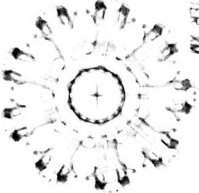
## PERFORMANCE

CRUISING SPEED - 95mph MAXIMUM - 118mph  
 RANGE - 300 miles

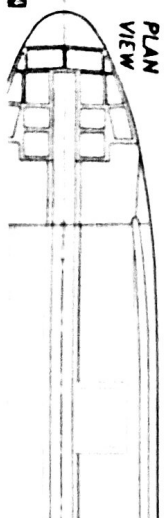


(ENGINES - BRISTOL JUPITER XII FOR H.P.42E WITH DOUBLE 2-BLADED PROPELLERS SUPERCHARGED JUPITER XII FOR H.P.42W AND TRIPLE FOUR-BLADED PROPELLERS)

JUPITER XII SHOWN AT THREE GENERAL SCALE

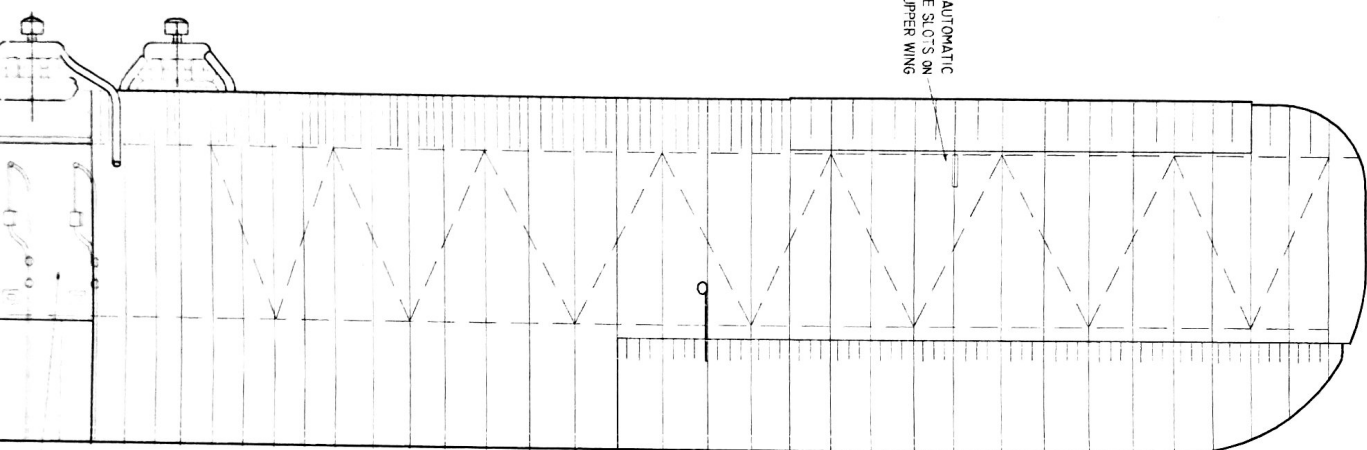


## PLAN VIEW



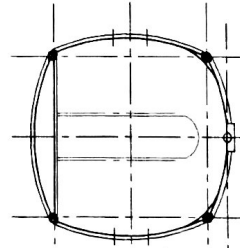
AUTOMATIC LE SLOTS ON UPPER WING

## UNDER PLAN



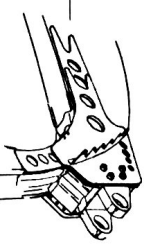
UPPER WING PANELS

## TYPICAL FORWARD FUSELAGE SECTION



DETAIL AT JUNCTION OF WING MAINSPAR

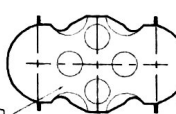
## FUSELAGE FORMER



HALF-TUBE FLANGES TOP AND BOTTOM

WING SPAR BRACES HAVE CORRUGATED WEBS WITH CHANNEL-FABRICATED TOP AND BOTTOM FLANGES

## DETAIL OF MAINSPAR NOT TO SCALE



FORMERS WELDED TO WEBS

## WING PROFILE - R.A.F. 28



UPPER WING CHORD - 15'-6" (4.725)  
 LOWER WING CHORD - 11'-6" (3.505)

AUTOMATIC SLOTS 20°-1½%  
 1-11½% chord (fixed) - open & close at 9° manoeuvre incidence

# Handley Page H.P. 42



EMBLEM OF IMPERIAL AIRWAYS LTD

SCALE 1:72

AEROPLANES CO. UK

