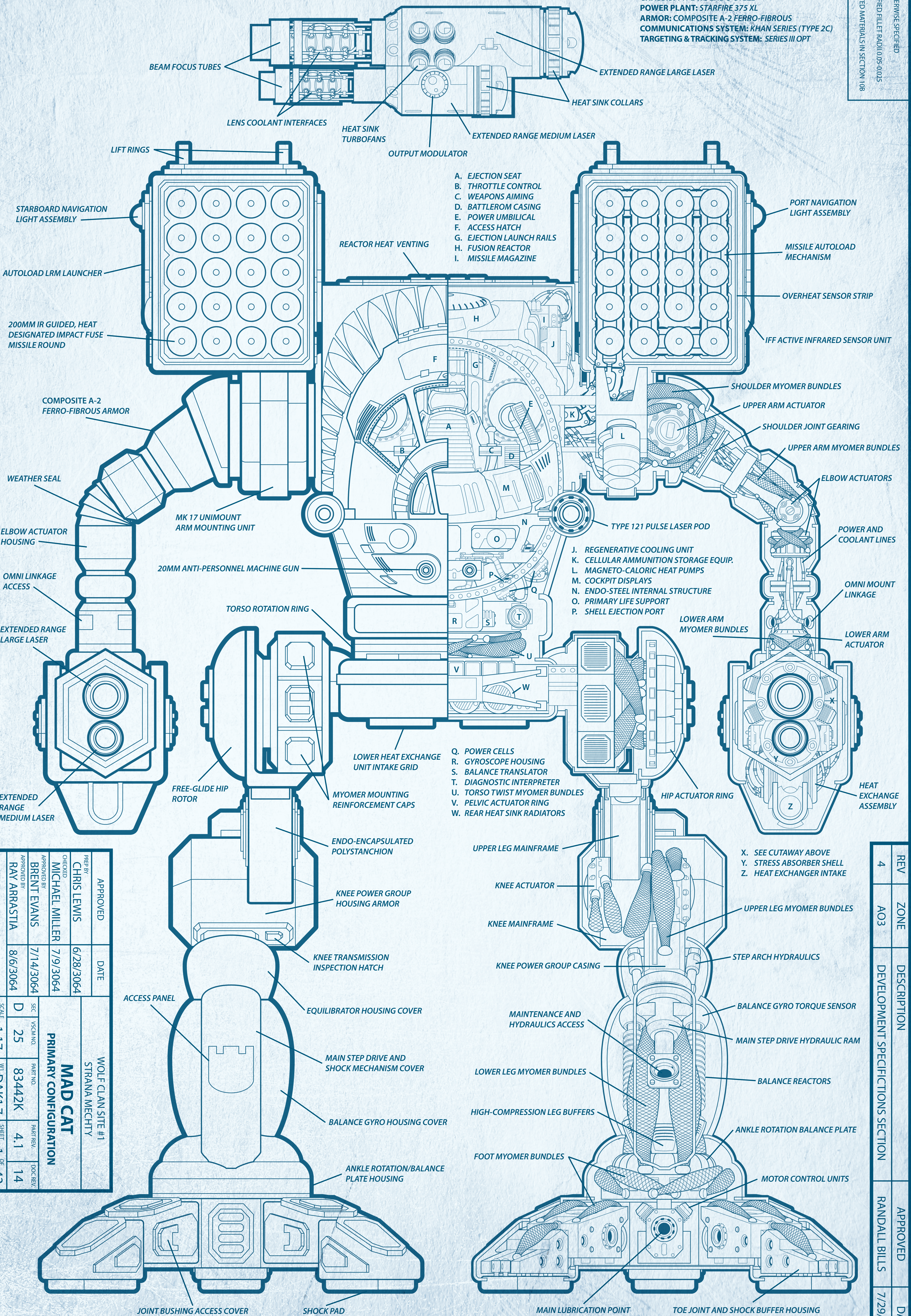


BATTLETECH: MAD CAT (TIMBER WOLF)

CHASSIS: TYPE W3 ENDO-STEEL
 POWER PLANT: STARFIRE 375 XL
 ARMOR: COMPOSITE A-2 FERRO-FIBROUS
 COMMUNICATIONS SYSTEM: KHAN SERIES (TYPE 2C)
 TARGETING & TRACKING SYSTEM: SERIES III OPT

NOTES: UNLESS OTHERWISE SPECIFIED
 1. UNSPECIFIED FILET RADIUS 0.05-0.025
 2. RESTRICTED MATERIALS IN SECTION 108



APPROVED	DATE	WOLF CLAN SITE #1 STRANA MECHTY MAD CAT PRIMARY CONFIGURATION
DESIGNED BY CHRIS LEWIS	6/28/3064	
CHECKED BY MICHAEL MILLER	7/9/3064	
APPROVED BY BRENT EVANS	7/14/3064	
APPROVED BY RAY ARRASTIA	8/6/3064	
DEVELOPMENT RESOURCES	SCALE: 1:17	
	SIC: D	
	VSCM NO: 25	
	PART NO: 83442K	
	PART REV: 4.1	
	DOC REV: 14	
	SHEET: 1 OF 43	

REV	ZONE	DESCRIPTION	APPROVED	DATE
4	A03	DEVELOPMENT SPECIFICATIONS SECTION	RANDALL BILLS	7/29/3064